

Highs and lows of lockdown months

- * High praise where due: heroes of lockdown || p2
- * Lockdown's unexpected treasures: walks through London as you never thought you'd see it || p4
- * New tenant hardship fund: cash help for those of you hit hardest by the pandemic || p7
- * Top site at Morland Mews to reopen if safe || p7



BROOKE

WINNING POSTER!

Our hearty congratulations to mega-talented nine-year-old Brooke, who drew this fabulous poster illustrating how you can protect yourself against Covid-19, for our poster competition. A £20 Amazon voucher is on its way to Brooke and her artwork will be on a wall near you soon.

LOCKDOWN UPDATE

Offices still closed

All our offices are still closed to everyone but staff and some of the contractors working for us.

Our staff are all working from home. They are only going into our offices or out to your homes or estates for tasks that cannot be done from their home.

Please don't knock on the door (or windows!) if you see one of our staff in an office. They won't be able to let you in or help you with any queries face-to-face.

Problems with bulky rubbish and recycling

Household clear-outs have been popular during lockdown but caretaker Spencer has spent far too much time clearing up after inconsiderate people who have been dumping their bulky items and rubbish outside. We will be taking this problem up with the **residents panel** so we can agree a way of dealing with rubbish and recycling that is fair for you all.

See also page 6.

Morland Mews garages

The pandemic has brought work to a halt on the garage conversion project. However we are now starting to plan the works. Later this year we will be consulting neighbours on aspects of the project to make sure the works cause minimum disruption.

More news and service updates on pages 3, 6, 7 and 8

Need to get in touch with us?

Emailing us

Emails sent to info@barnsbury.org are checked through the day by staff working from home and sent on to the colleague best able to deal with the matter. info@barnsbury.org.uk

Phoning us

Call between 9.30am-12 noon and 2-5.30pm and your call will be picked up by one our staff. They will transfer your call or take a message if they cannot deal with the matter themself. 020 7704 2324

SOLACE IN ISLINGTON DOMESTIC ABUSE: NEED HELP NOW? CALL THE LONDON FREEPHONE 0808 802 5565

Reports of domestic abuse have risen by over 66% over lockdown. If you need help because of domestic abuse, contact Solace in Islington for free, confidential support. Solace helps men and women affected by domestic abuse.

Call 020 3795 5070 or email advocacy@solacewomensaid.org, Mon to Fri, 9am to 5pm.

IF YOU ARE IN DANGER NOW CALL THE POLICE 999

Help us celebrate Barnsbury HA's lockdown heroes

Over the first three months of lockdown we've been humbled by all those who have helped others, at risk to themselves. So here are some of our local heroes

thank you!



Lockdown's local heroes: Steve, Spencer, Chantal (right!), Ertan (featured in the Tribune), Joe H and Maurice

excellent use making medical scrubs, helped by neighbours digging deep into their linen cupboards. We'd name names if she wasn't so modest!

Beyond the call of duty

We also want to thank some of our staff for service well beyond the normal call of duty. New estate handyman Steve Woodgates was thrown right in at the deep end when he joined us in April, to fill Dickie's tiny boots. Steve has done gas safety checks for us for years,

From the start of lockdown lots of you showed real community spirit. TRA chair Liam O'Dowd tells us the Thursday night clapping for our NHS and care workers was a real morale booster. But there's more.

Plucky shoppers

A little bird tells us Barnsbury HA's community heroes include Joe Hagland and Maurice, both of Highbury View, who've been doing shopping for neighbours.

At Morland Mews Chantal has also been helping with shopping, as has TRA vice chair Joe Spikesley. Joe also found time to

organise a 90th birthday bash for Ivy Finch (see story opposite).

A very special welcome home for Ertan Nazim, who spent close to a month in intensive care at University College Hospital. Bus driver Ertan, who drives the 390 from Archway to Kings Cross, self-isolated with wife Margaret in late March, but both quickly fell ill. Ertan's amazing recovery was followed in May by a far happier occasion - their 44th wedding anniversary.

We know others of you have also done heroic work. As we reported in the last issue, one tenant put her sewing skills to

alongside his late father. He has kept up these vital inspections but also made sure all your emergency repairs were sorted.

Our thanks too to caretaker Spencer Benoit, still with us for lockdown. Spencer has done a great job of keeping your estates clean and tidy and looking good.

Graphic with asterisk icon: If you know of someone who has gone the extra mile for others during lockdown, get in touch with Dean. dean@barnsbury.org

HAVE YOUR SAY ON: Making Islington's streets more people-friendly

One of the best things about lockdown was the huge drop in traffic and, with it, much cleaner air, far less noise, better safety for walkers and cyclists and a big boost for nature and our wildlife.

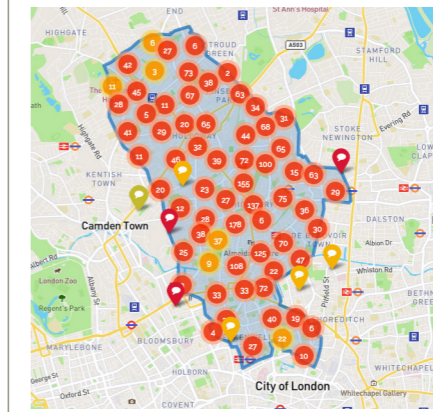
Led by environment member Councillor Rowena Champion, the council is trying to make sure we don't totally lose our cleaner, quieter streets when life returns to 'normal'. And it wants to hear what you have to say.

The council is making some pavements wider and installing bollards and planters. And there are a few new bike lanes.

It won't be safe to mingle with others for a long time so the council is also tweaking road layouts to make it easier to keep your distance on foot.

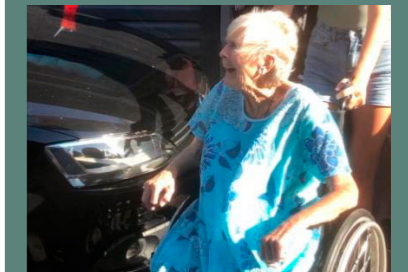
So you can have your say, the council has created a special online map. All you need do is

click on a bit of the map near you then add your comments. You can also email Councillor Champion direct at rowena.champion@islington.gov.uk



Tell the council how you think roads could be more 'people-friendly' using the online map: https://islingtonpeoplefriendlystreetscommonplace.is/

Birthday joy but also a few tears for older folk over lockdown



Because of lockdown, Ivy Finch's 90th birthday had to be a socially distanced knees-up. Ivy was one of the very first to move to Morland Mews shortly after it was built. Our warmest wishes to Ivy and here's to an up close and personal 91st!

We're sad to report the passing of Mary Gaffney, another BHA long-timer. Mary moved to Highbury View 18 months ago but she and her sister lived at Morland Mews for many years. Originally from Ireland, Mary was a popular regular on the dance and coffee morning circuits.



Mary at our 2017 summer fun day with Felicity and the pearly king and prince of Finsbury

Two of the best walks:



Highgate Wood and Queens Wood

Jeanetta says the bluebells were beautiful in spring and the wildflowers abundant at both Highgate and Queens woods. For a scenic route to the woods from Finsbury Park, take the Parkland Walk, a disused railway line that goes all the way to Muswell Hill. Or take the bus or tube towards Highgate Station. From Highgate Woods you can walk to Alexandra Palace. www.parkland-walk.org.uk



Lea Valley Nature Reserve

This huge nature reserve includes the Waterworks Centre and Middlesex Filter Beds and the Walthamstow marshes and reservoir. Either follow the canal south to the Olympic Park then carry on along the River Lea to Stratford. Or go north for Walthamstow marshes and reservoirs. Either way you will find a fantastic urban wildlife sprawl. To get there by bus, catch the 56 from the Angel to the ice rink on Leabridge Road. You'll find a path to the canal and other parts of the nature reserve behind the ice rink. www.visitleevalley.org.uk

All photos by Jeanetta Ben



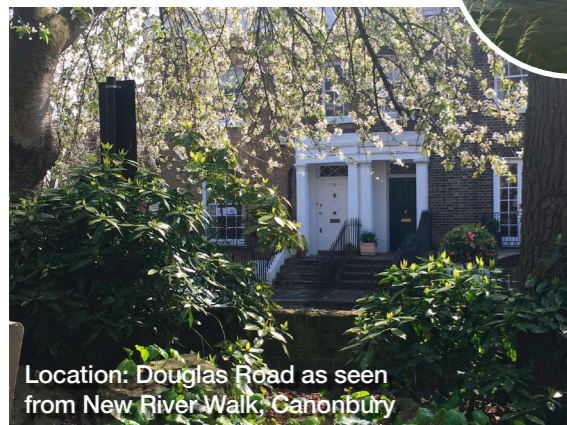
Location: Woodberry wetlands in Manor House, on the New River Walk

'Several months later the swan was proudly showing off her seven cygnets.'



City living: walks from your own front door

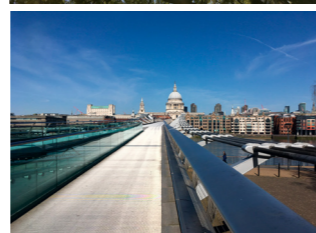
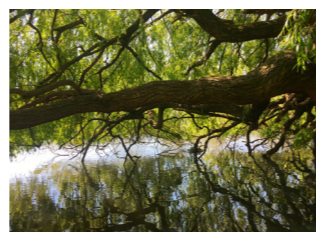
Cars stayed put and all over Islington people took to walking and cycling. Here are some of the sights that were beautifully caught on camera by **Jeanetta** and **Ben** from **Gissing Walk**



Location: Douglas Road as seen from New River Walk, Canonbury

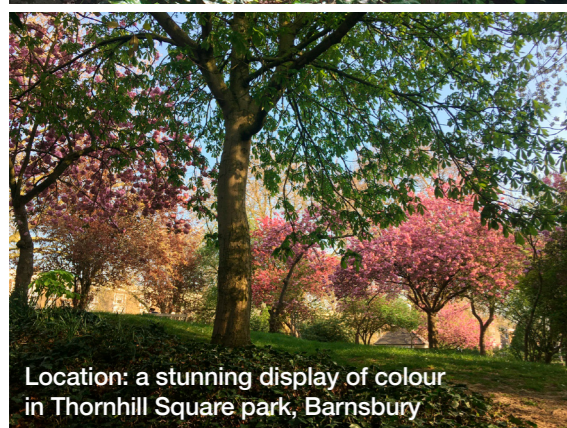


Location: 1820s watchman's hut on New River Walk



Pictured above:
 * Regent's Park, reached by the canal towpath from Islington early in lockdown
 * The wobbly bridge, from the Tate to St Paul's.

'It was a very special and eerie experience in the first week of lockdown, as was walking around the City of London and the West End.'



Location: a stunning display of colour in Thornhill Square park, Barnsbury



Location: Lea Valley Park, near Leabridge Road, Clapton

Lockdown London

TINY REMINDER OF RURAL ISLINGTON THRIVING IN THE HANDS OF VOLUNTEER GARDENERS

Thornhill Gardens at the corner of Thornhill Road and Richmond Avenue has been part of the local landscape since 1889, writes volunteer gardener and tenant board member **Janice Walsh**



Open gate policy: tranquil Thornhill Gardens

Back then Thornhill Gardens was just a small pocket of land that had once been part of a market garden, owned by Yorkshire dairy farmer and covering 68 acres of semi-rural Islington.

Under lockdown we have become a more regular team of committed gardeners. We are very adventurous and many of our number very knowledgeable. With so much more spare time we no longer only work on the last Sunday of the month.

We have had ample support from the council. The hut has been given a complete overhaul and now we have a massive safe for the garden tools.

Through sheer hard work we have created a welcoming and interesting place. The shrubs are kept in hand. We look after a Celtic memorial put there to remember local people who died in WW1. And we have plans to add a wildlife area.

Treat for toddlers

The roses are quite splendid, but there's also a safe track for young children through the bushes, the fernery and a stumpery. All are very regularly visited by small children.

Between the rose beds is an almost perfect lawn - a lovely calm place where you can relax, picnic, read and cloud-watch. You can watch birds too. There have been so many nests and fledglings this year that thrushes especially regularly strut their stuff safely on the lawn.

* The vestry was a forerunner to what is now Islington Borough Council.

Please come along to Thornhill Gardens, at the corner of Richmond Gardens and Thornhill Road, to see how the garden has been transformed.

Email Janice at janicew06@aol.com if you would like to join the gardening team. All ages and levels of gardening knowledge and ability (from newbie to expert) are welcome.

What's happening about...

Recycling bags

If you have run out of recycling bags, please go to the council office at Orkney House on the Bemerton at 195-199 Caledonian Road. Open from 8am to midnight, Sunday to Thursday, 10am to 2am Friday and Saturday.

Checks on wellbeing

Early in lockdown we called over 150 of you to check that you were okay and still regularly call those of you we know to be vulnerable. If you'd like us to stop calling, or do it less often, let us know. Or if we missed you, and you'd like to be added to our list, get in touch!

Empty homes

Contractors Westbourne are at last back getting empty homes ready to let to new tenants. Each job is being planned very carefully to avoid any safety risks to neighbours and workers.

WORRIED ABOUT RISING POWER BILLS? *

LOCKDOWN HAS LED TO A HUGE JUMP IN THE AMOUNT OF ELECTRICITY AND GAS WE USE AT HOME, AND THAT MEANS MUCH HIGHER BILLS. CALL GREEN DOCTORS FOR FREE EXPERT ADVICE ON CUTTING FUEL COSTS - AND HELPING THE PLANET.

☎ 0300 365 5003 ✉ greendoctorsLDN@groundwork.org.uk

Gas checks if you have been shielding during lockdown...

By law we now have to inspect both the gas supply to your home and any gas appliances if you have been shielding. Steve, who is doing the inspections, follows strict guidelines for PPE, sanitising and keeping a safe distance. But if you do have concerns let us know so we can agree an arrangement that will give you peace of mind.

Fire safety warning: alarm over fire doors found dumped

We have been alarmed to find dumped fire doors from some of our homes.

These doors are built and installed for fire safety so are extremely important protection if a fire breaks out. The doors help to stop potentially deadly smoke and flames spreading.

We are now trying to find out which homes the dumped doors came from. We will then have to pay to buy new fire doors and get them fitted.

The bill for this will be sent to the people who took off their fire doors in a clear breach of their tenancy rules.

AROUND THE HOUSES: News on our services

Repairs to your home

We're now able to do urgent* repairs as well as those we treat as emergencies. But sensible hygiene measures mean each job is taking a little longer to organise and carry out.

We are not doing repairs if the problem is not urgent so we'd politely ask that you don't report these yet. If you call for a repair that can wait without causing other serious problems, we will log it but it will not be done until services are back to normal.

* See the resident information page on our website if you are not sure if your repair would be rated urgent or not. barnsbury.org

Planned repairs and major building works

With outdoor work much safer than doing work indoors, we have restarted the sort of works we plan ahead each year.

Typically these include repairing or upgrading roofs and outside parts of houses and blocks of flats, and some shared areas. All the work has been assessed for risk by our contractors.

There will be a bit of a backlog as we try to catch up with work we'd meant to do in the spring months. Please let us know if the delay has meant a problem in your home is now much worse.

Household clear-outs and waste and recycling bags

Household clear-outs have proved popular during lockdown. But unfortunately a few of you are merely dumping outside the stuff you don't want.

Caretaker Spencer has had to clear away a lot of bulky items, wasting valuable time sorting out problems caused by a minority. If you are throwing out **bulky items** please call the council or take them to the **Refuse Centre** in **Hornsey Street, N7**.

Some of you are also putting out your rubbish and recycling bags too early. The collection dates have not changed.

Both problems are proving popular with no-one but foxes and fleet-footed vermin. With local restaurants closed because of the pandemic they are looking for new food sources. Please don't encourage them.



Thanks to Robin Don for his graphic depiction of how bad the rubbish bag problem could get at Morland Mews!

Top site at Morland Mews reopens for summer season

One of our surveyors is doing a systematic check on the possible risks of reopening the **topsite**, our fenced-off sports ground at the western tip of Morland Mews.

We will also be talking to the tenants and residents association about reopening the site.

We closed the site three months ago as a safety measure. Infection rates have dropped in Islington

but the virus has not gone away and right across the world levels have risen rapidly when people have lowered their guard too early.

If everyone we talk to agrees that it is safe to reopen the topsite we will keep an eye on how those using it behave. If we find people are behaving in ways known to be risky we will have no choice but to close it down again.

The grim side of lockdown: more neighbour disputes and antisocial acts

We know many of you have had a lot more stresses to deal with at home, made far worse by being shut in together for weeks on end.

There have been a lot more arguments, both in your homes and sometimes with neighbours.

Please do not make life harder for others by using noisy tools at unsociable hours or for long periods, or by playing loud music. You should find neighbours extend you the same courtesy.

Shocking reports

In recent weeks we have seen appalling scenes as lockdown has been eased. It has not been widespread in Islington but there have been a small number of disturbing incidents.

Most recently we have had

complaints about people urinating in public late at night. If these people can be identified we will take appropriate action, though this may be of little comfort to you at the time. **Our best advice for you in this situation is to phone Islington Council's ASB line on ☎020 7527 7272 or call the Metropolitan Police on ☎101.**

Temporary staff helping out

Temp surveyor Joe Johnson, *right*, is helping us catch up with repairs and other matters that were put on hold during lockdown.

We also have an interim operations director, Vivienne Astall, who is filling in for Pam Sedgwick while Pam recovers from illness.



NEW: launching our new 'tenant hardship fund'

Our board has agreed to our setting up a new fund to help those of you hit hardest by the pandemic. The fund can help pay for fuel bills, replacement white goods (like a fridge or cooker) or essential bits of furniture. To find out if you qualify or to apply for a grant payment, contact Felicity.

✉ felicity@barnsbury.org
☎ 020 7704 2324

Paying the rent

If you have lost a job or all or some work in the lockdown please tell Felicity so she can offer support and advice. You will still have to pay your rent so it is vital you claim universal credit immediately. We're well aware that making a claim for universal credit is hard work but we can help.

Temporary evictions ban

An official but temporary ban on evictions for rent arrears stops at the end of August. We don't want to evict any of you so please let us know if you are struggling to keep up with your rent payments.

✉ felicity@barnsbury.org
☎ 020 7704 2324

ABOUT BARNSBURY *News*

Editor: Dean McGlynn

To contact us or contribute write to 16b Cloudesley Street, N1 OHU, email info@barnsbury.org or call ☎ 020 7704 2324. We have limited space so may edit contributions. We will not print anything cruel, libellous or defamatory.

Your contributions welcome

If you or a group of you would like to write an opinion piece or share good news (or bad!) or just ask what others think, send it in. We'd also love your photos or pictures. Please send them to Dean formatted as large jpg files.

* MAY ISSUE SUDOKU

3	7	1	5	2	9	4	6	8
5	9	4	6	8	3	1	7	2
6	2	8	7	4	1	9	3	5
9	6	5	8	3	7	2	1	4
2	8	7	9	1	4	6	5	3
1	4	3	2	6	5	7	8	9
8	5	9	4	7	6	3	2	1
4	1	6	3	5	2	8	9	7
7	3	2	1	9	8	5	4	6

FAMILY QUIZ

HOW WELL DO YOU KNOW YOUR ISLINGTON?

Brain ticklers for inquisitive families, by Janice Walsh

1 Which sport that flourished first in Barnsbury was later moved to new grounds in St John's Wood? Name the sport and the grounds.

2 Why are pavements and buildings built higher than the road level in Liverpool Road and Cloudesley Place?

3 Which pub is named after the city guild that built many of the loveliest Barnsbury houses.

4 In 1834 trade union members marched from Copenhagen Street to Whitehall in support of which Dorset labourers?

5 Just off Pentonville Road is a park named after the most famous clown to live in Islington. What is the park called?

6 A city goldsmith (born 1560, died 1631) managed the building of the waterways that brought fresh, clean water to the city. His statue stands on Islington Green. What is his name?

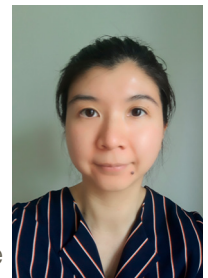
7 What's the name of the special children's puppet theatre in Dagmar Passage.

8 What is the name of the big building built specially to test if the theory of putting people in solitary confinement worked?

INTRODUCING

New finance director Yung Yung Lee

How long have you worked for Barnsbury HA?
Just over three months. I joined just one week before lockdown!



Describe your role in three words
Sorting things out.

What is your proudest achievement?
At the last organisation I worked for I managed four finance trainees, who all got promoted.

Where is your favourite place in the world?
My garden.

If you could eat one meal for the rest of your life, what would it be?
Chips with peas and gravy.

What do you like most about working for BHA?
BHA is small but has big ambitions. I've already been stretched and challenged. All good as I'm a big believer in continuous life-long learning.

SUDOKU

					1	3		9
9	7					5		
		3			8			
		5	1		2		4	6
2	3			6			5	1
1	8		5		4	7		
			6			1		
		7					9	3
3		8	2					

To solve the puzzle, each 3x by 3x box and each column going across and down must have all the numbers 1 to 9, with no number used twice. The sum total of each box = 45.

Answers to this sudoku will be given in the next issue of Barnsbury News.

See top right for the answers to the last issue's sudoku, hoping they'll make Mr Grant of Morland Mews a happy man.

COURTESY OF OPENSKY.CA/SUDOKU

* QUIZ ANSWERS

1. Cricket/Lords
2. They were inner city drove roads used for the mucky task of taking cattle to the Royal Agricultural Hall, now the Business Centre.
3. The Drapers Arms
4. The Tolpuddle Martyrs
5. Grimaldi Park
6. Hugh Myddleton
7. Little Angel Theatre
8. Pentonville prison.